

Pole Size		Butt Dia C mm	Mass t	Cable Entry D mm	Inspection Box E mm	Planting Depth F m
Length A m	Tip Dia B mm					
4.5	115	183	0.210	150 X 75	465 X 145	1.00
4.5	130	198	0.237	150 X 75	465 X 145	1.00
6.0	115	205	0.307	150 X 75	465 X 145	1.20
6.0	130	220	0.346	150 X 75	465 X 145	1.20
7.5	115	228	0.419	150 X 75	465 X 145	1.35
7.5	130	243	0.473	150 X 75	465 X 145	1.35
8.0	130	250	0.522	150 X 75	465 X 145	1.40
9.0	130	265	0.617	150 X 75	465 X 145	1.50
10.0	130	280	0.720	150 X 75	465 X 145	1.60
11.0	130	295	0.828	150 X 75	465 X 145	1.70
12.0	130	310	0.967	150 X 75	465 X 145	1.80
13.0	130	325	1.066	150 X 75	465 X 145	1.90

RETICULATION

Length m	Dimensions		Mass kg	Strength kN	Planting Depth m
	Tip Dia mm	Butt Dia mm			
7.0	130	235	434	3.5	1.3
9.0	160	295	646	5.5	1.5
9.0	160	295	807	8.5	1.5
9.0	190	325	950	12.0	1.5
10.0	160	310	866	5.5	1.6
10.0	190	340	1095	12.0	1.6
11.0	160	325	1074	8.5	1.7
11.0	190	355	1287	15.0	1.7
12.0	160	340	1051	8.5	1.8
13.0	160	355	1261	5.5	1.9
13.0	190	385	1449	8.0	1.9
14.0	192	402	1770	10.0	2.0

TRANSMISSION & DISTRIBUTION SINGLE SECTIONS

Length m	Dimensions		Mass kg	Strength kN	Planting Depth m
	Tip Dia mm	Butt Dia mm			
15.6	264	498	2872	15.0	2.20
15.6	264	498	2954	25.0	2.20
15.6	264	498	2984	30.0	2.20
16.8	228	480	2825	18.0	2.30
16.8	228	480	3034	32.0	2.30
16.8	300	552	4140	50.0	2.30
16.8	300	552	4424	55.0	2.30
18.0	228	498	3076	15.0	2.40
18.0	228	498	3250	28.0	2.40
18.0	228	498	3328	36.0	2.40
18.0	300	570	4822	50.0	2.40
19.2	264	552	4242	25.0	2.50
19.2	300	588	4856	36.0	2.50
19.2	300	588	4989	50.0	2.50
19.2	372	660	6003	65.0	2.50
21.0	300	615	4960	21.0	2.70
21.0	300	615	5084	32.0	2.70
21.0	300	615	5343	50.0	2.70
24.0	300	660	6140	32.0	3.00
24.0	300	660	6510	40.0	3.00
24.0	300	660	6532	50.0	3.00

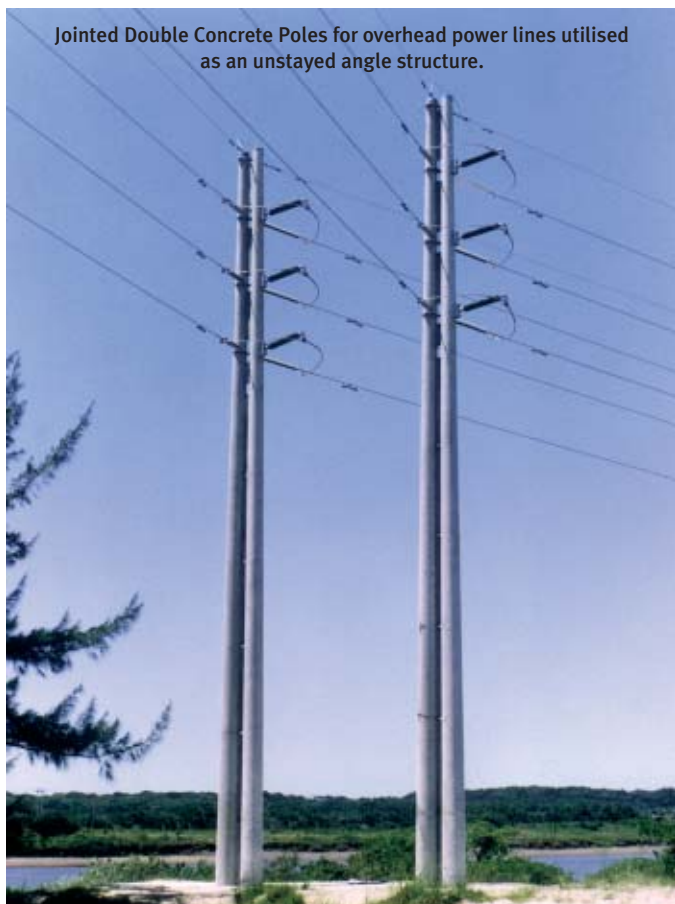
JOINTED SECTIONS

Length m	Dimensions		Mass kg	Strength kN	Planting Depth m
	Tip Dia mm	Butt Dia mm			
26.4	300	696	9038	50.0	3.20
28.8	300	732	10413	50.0	3.50
31.2	300	768	11680	50.0	3.70
33.6	300	804	13347	50.0	4.00
36.0	300	804	15040	50.0	4.20

DOUBLE POLES

Length m	Dimensions		Mass kg	Strength kN	Planting Depth m
	Tip Dia mm	Butt Dia mm			
19.2	372	660	12006	206	2.50
21.0	300	615	10686	156	2.70
24.0	300	660	13064	156	3.00

The mass of the connecting steel elements is not included in the pole mass as given in the table above.



Jointed Double Concrete Poles for overhead power lines utilised as an unstayed angle structure.